



Vector Pipeline™

Vector Pipeline
Business Update Meeting
October 13, 2021



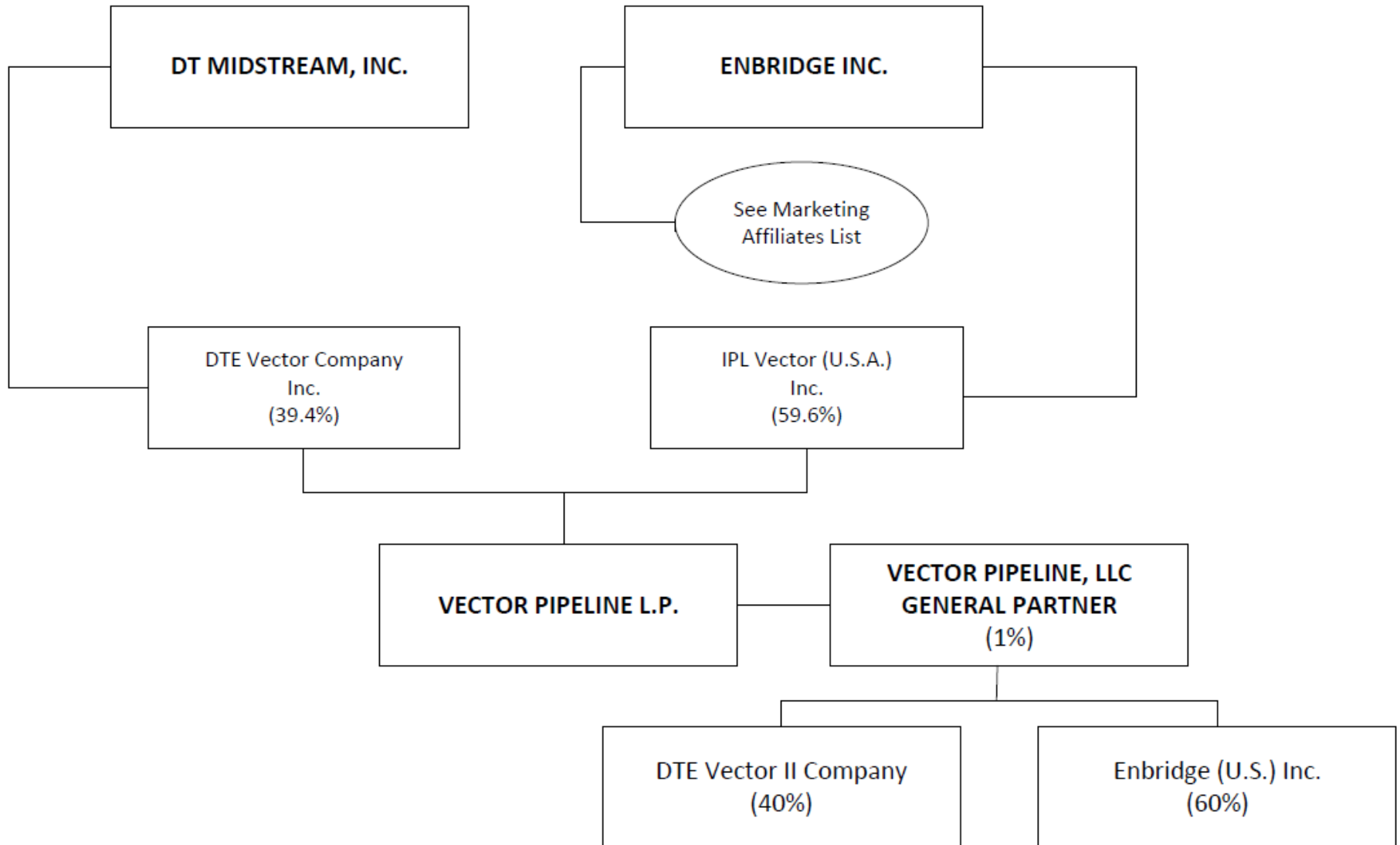
Today's Agenda

- Pete
 - Introductory Remarks
 - Organization Update
- Matt
 - Projects
 - System Operations
 - Operational Efficiency
 - Future Opportunities
- Dennis
 - Daily Postings
 - Available Transport Capacity / Open Season
 - Customer Service Issues / Improvements



Vector Pipeline™

Partnership Structure





Vector Pipeline™

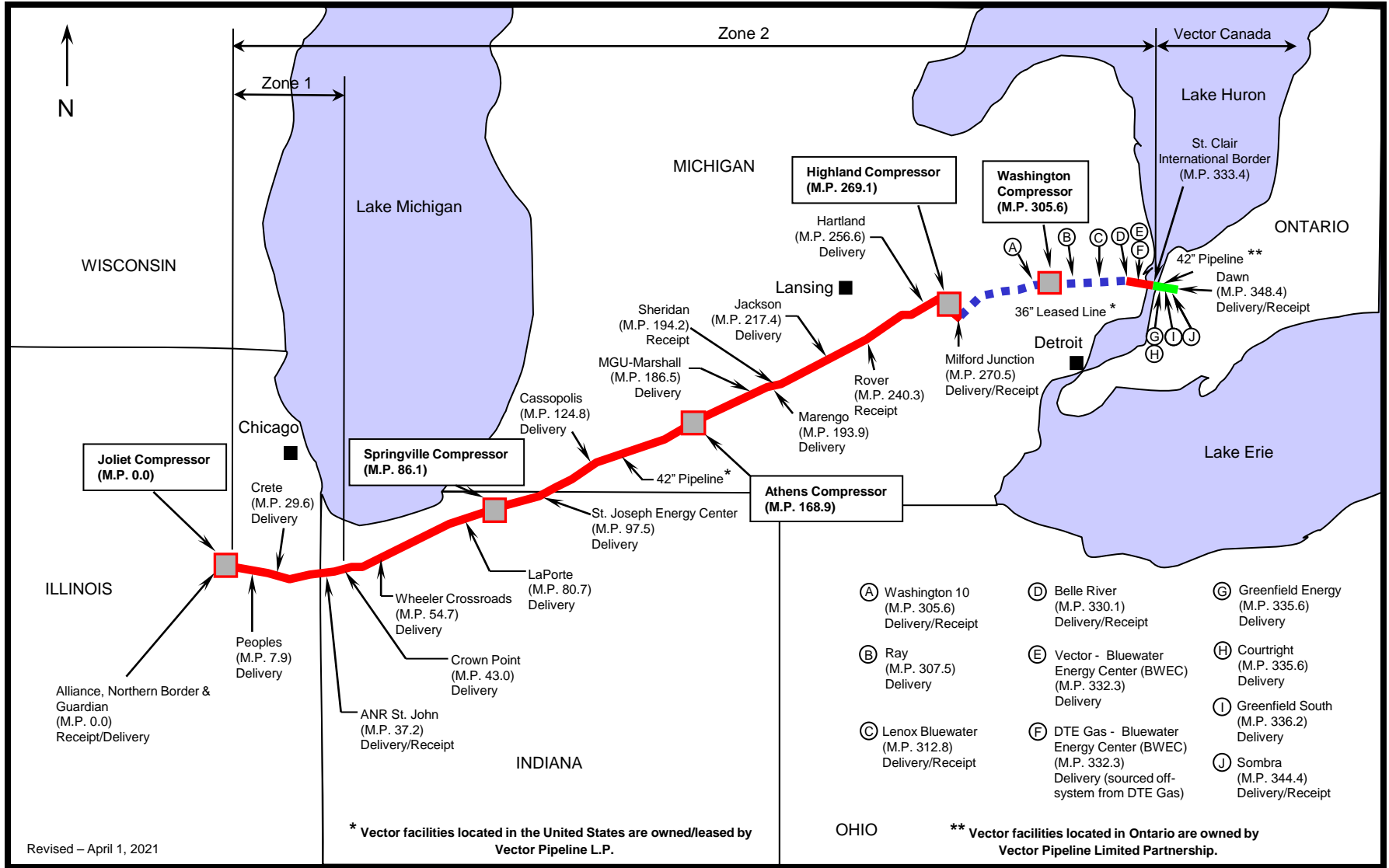
Matt Malinowski

Director, Market Development



Vector Pipeline System Map

Vector Pipeline™



Revised - April 1, 2021



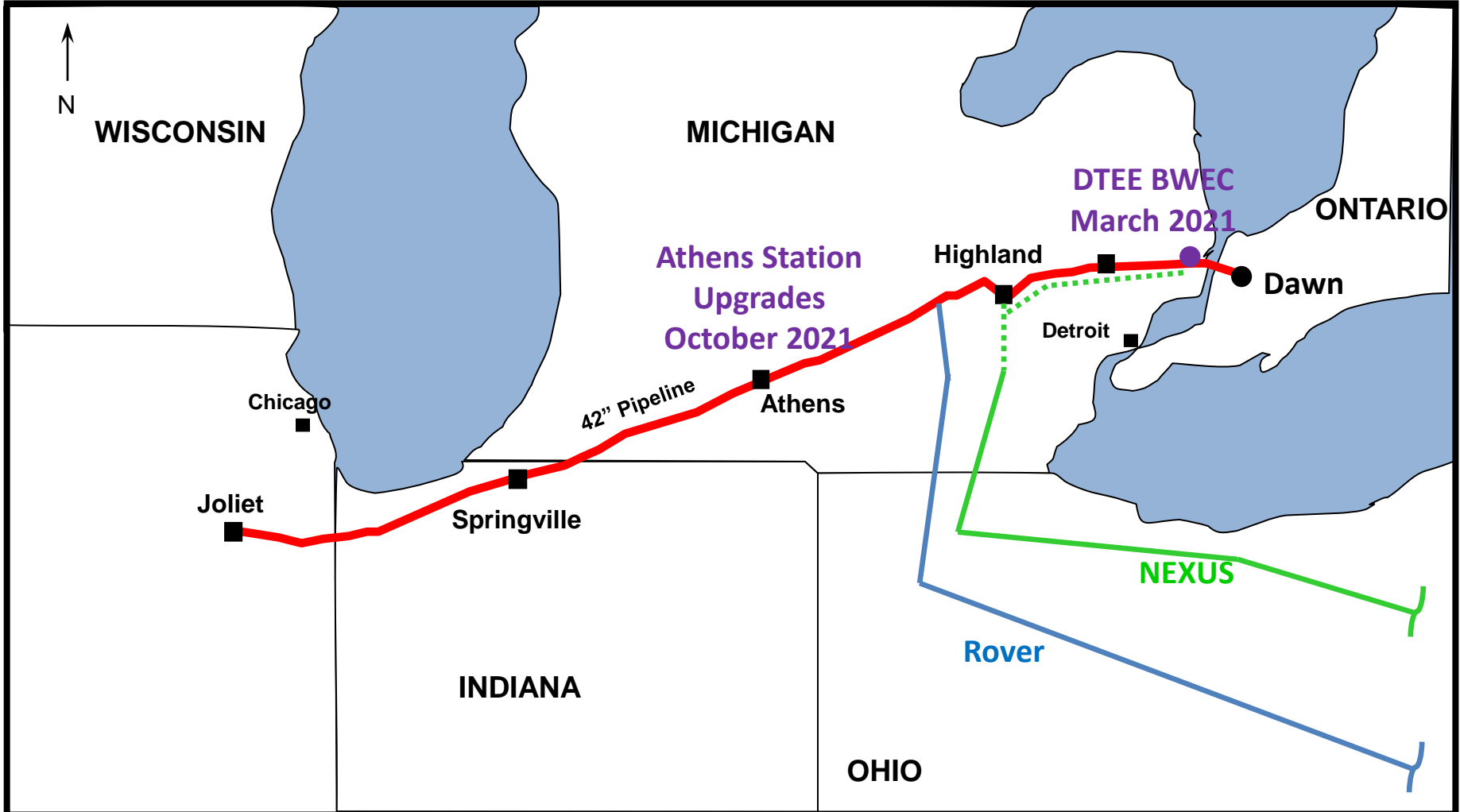
Vector Pipeline™

Projects



Vector Pipeline™

2021 Projects





Vector Pipeline™

DTE Electric BVEC

- New 1100 MW combined cycle powerplant just east of Belle River being constructed by DTE Electric
- Vector constructed a dedicated 24-inch lateral with a meter from Vector's mainline and a meter to source gas from DTE Gas Company (nominations from these two meters can only flow to this powerplant). Vector owns and operates both meters and the lateral.
- 180 MDth/d maximum volume. Each meter can support the full load.
- Lateral in-service began March 2021
- Test gas to begin late October
- Plant commercial in-service expected by in first half of 2022



DTE Electric BVEC

Vector Pipeline™





Athens Station Upgrades

- Install launcher and receiver traps at the station in order to segment a 270 mile pipeline (Joliet to Milford) into two smaller, more manageable sections.
 - Reduces risk during future inspection pig runs
 - Reduces duration of shut-ins to certain interconnections during pigging operations
 - Allows for more frequent cleaning pigs, if required



Vector Pipeline™

Future Maintenance/Outages

- Nothing planned that will impact firm services in 2022
- Vector will continue its normal ongoing maintenance activities including thorough equipment testing and inspections. This work is usually performed without affecting firm transportation services.



Vector Pipeline™

Operational Statistics

- Peak Day/Recap of Winter 2020/21
- Receipt / Delivery Summary
- BTU

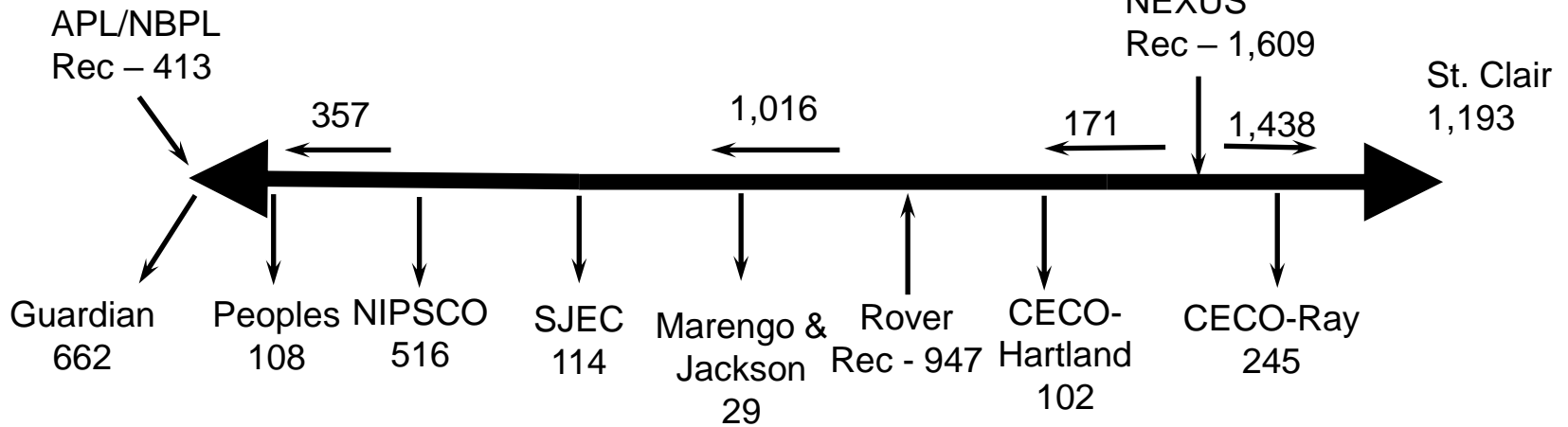


Vector Pipeline™

All-time Record Sendout Winter Peak Day 2018/19

Winter 2018/19 System Peak – 2,969 MDth
January 31, 2019

Michigan
Receipts
Wash 10
Bluewater
DTE Gas/
NEXUS
Rec – 1,609



Temperature Range – S.E. Mich. (White Lake): -13°F to -1°F

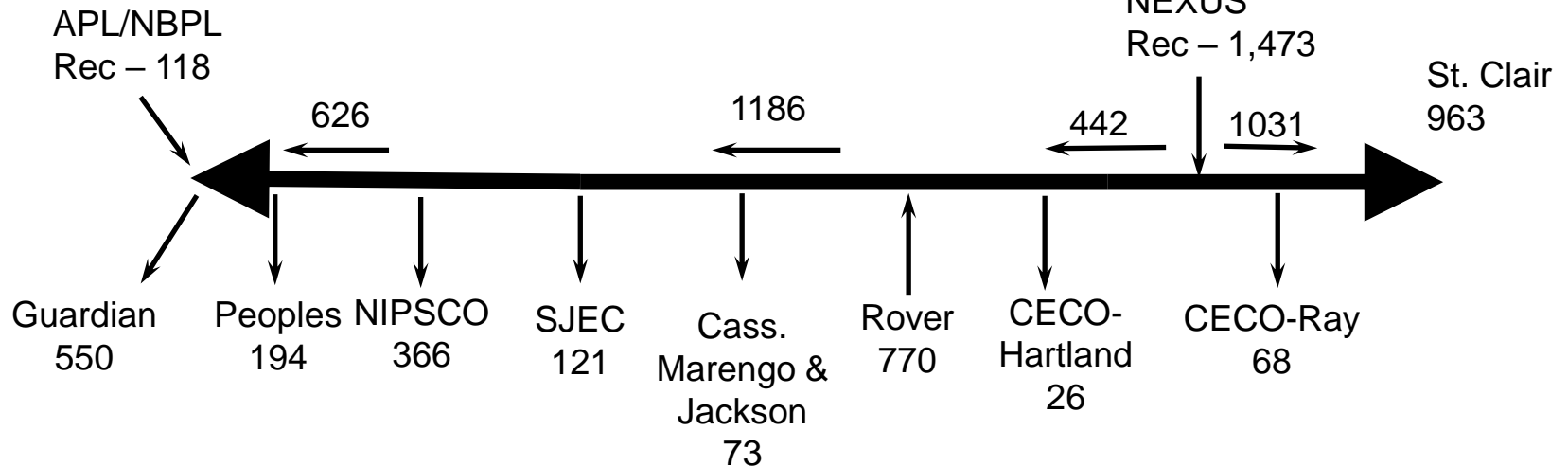


Vector Pipeline™

Winter Peak Day 2020/21

Winter 2020/21 System Peak – 2,361 MDth
February 7, 2021

Michigan
Receipts
Wash 10
Bluewater
DTE Gas/
NEXUS
Rec – 1,473



Temperature Range – S.E. Mich. (White Lake): 5°F to 12°F



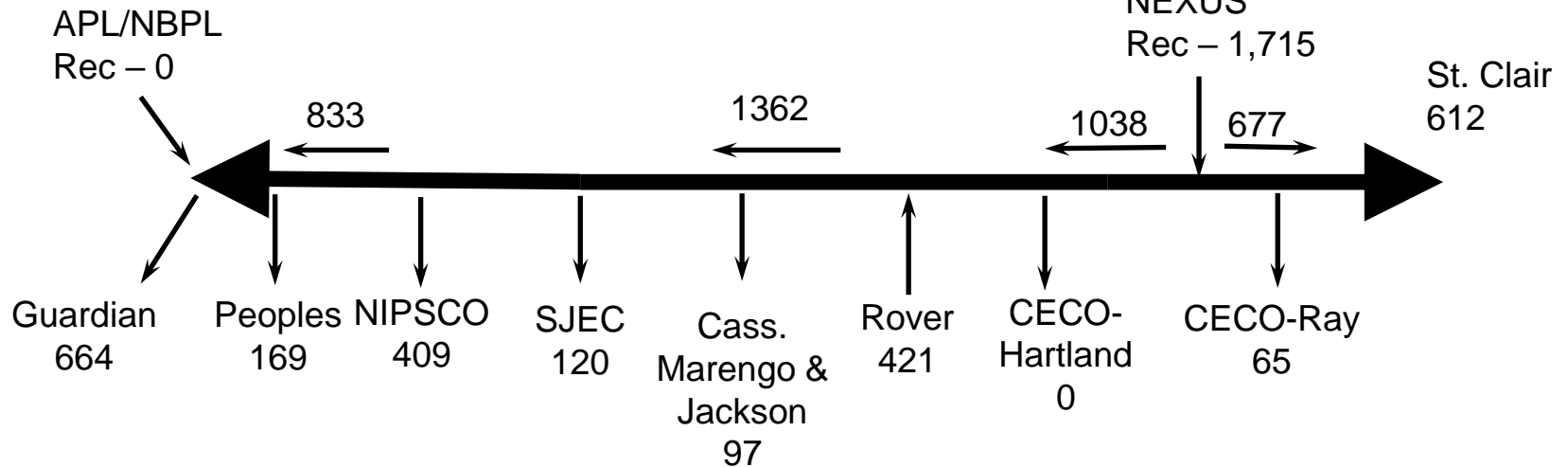
Vector Pipeline™

February 16, 2021

Highest westbound flows ever on Vector

February 16, 2021 – 2,136 MDth total

Michigan
Receipts
Wash 10
Bluewater
DTE Gas/
NEXUS
Rec – 1,715

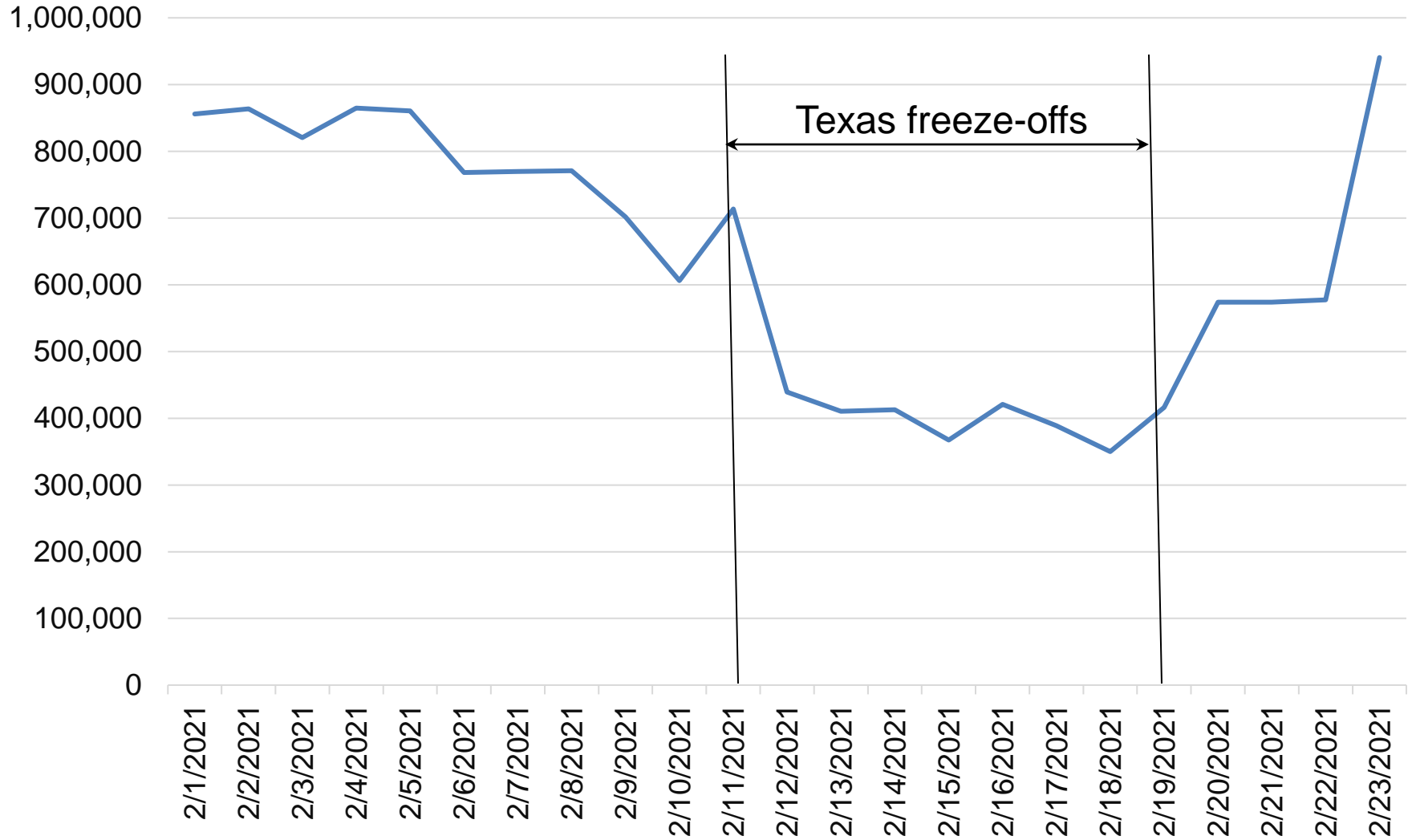


Temperature Range – S.E. Mich. (White Lake): 0°F to 18°F



Vector Pipeline™

Rover Receipts February 1 – 23, 2021

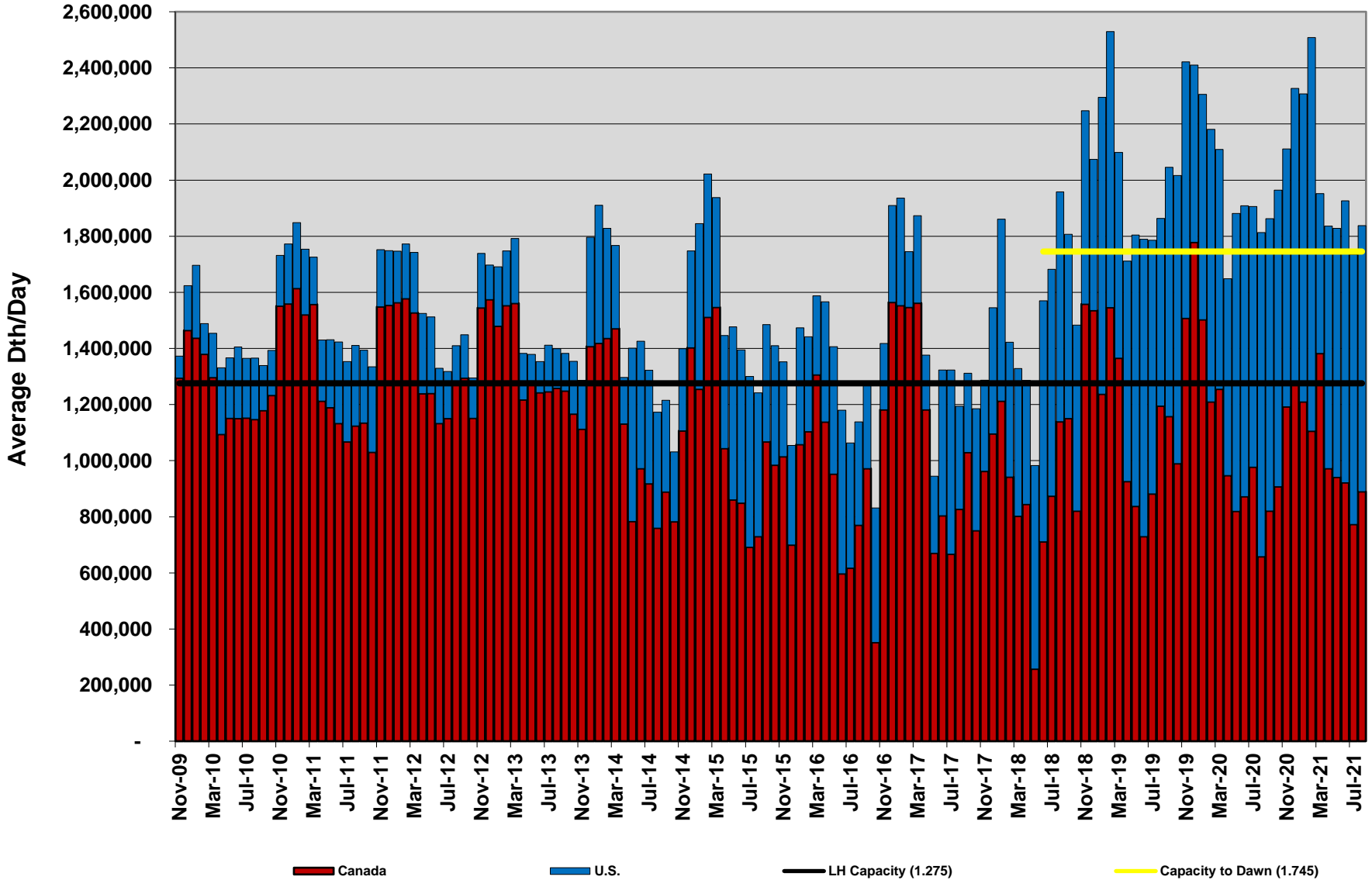




Vector Pipeline™

Scheduled Deliveries

(Includes Longhaul, Shorthaul, Backhaul, Lease and Segmentation)

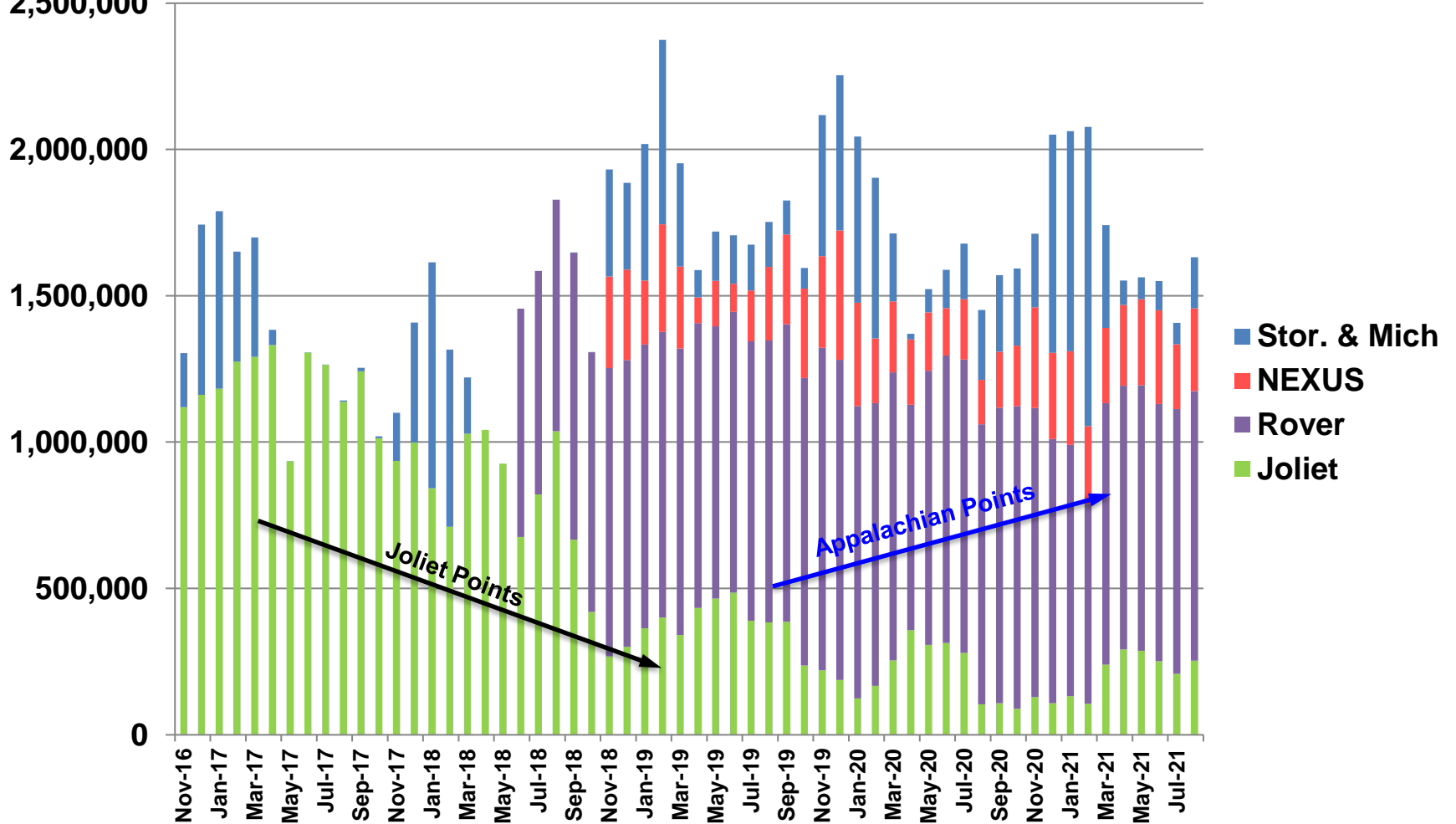




Vector Pipeline™

Receipts from Pipelines and Storage

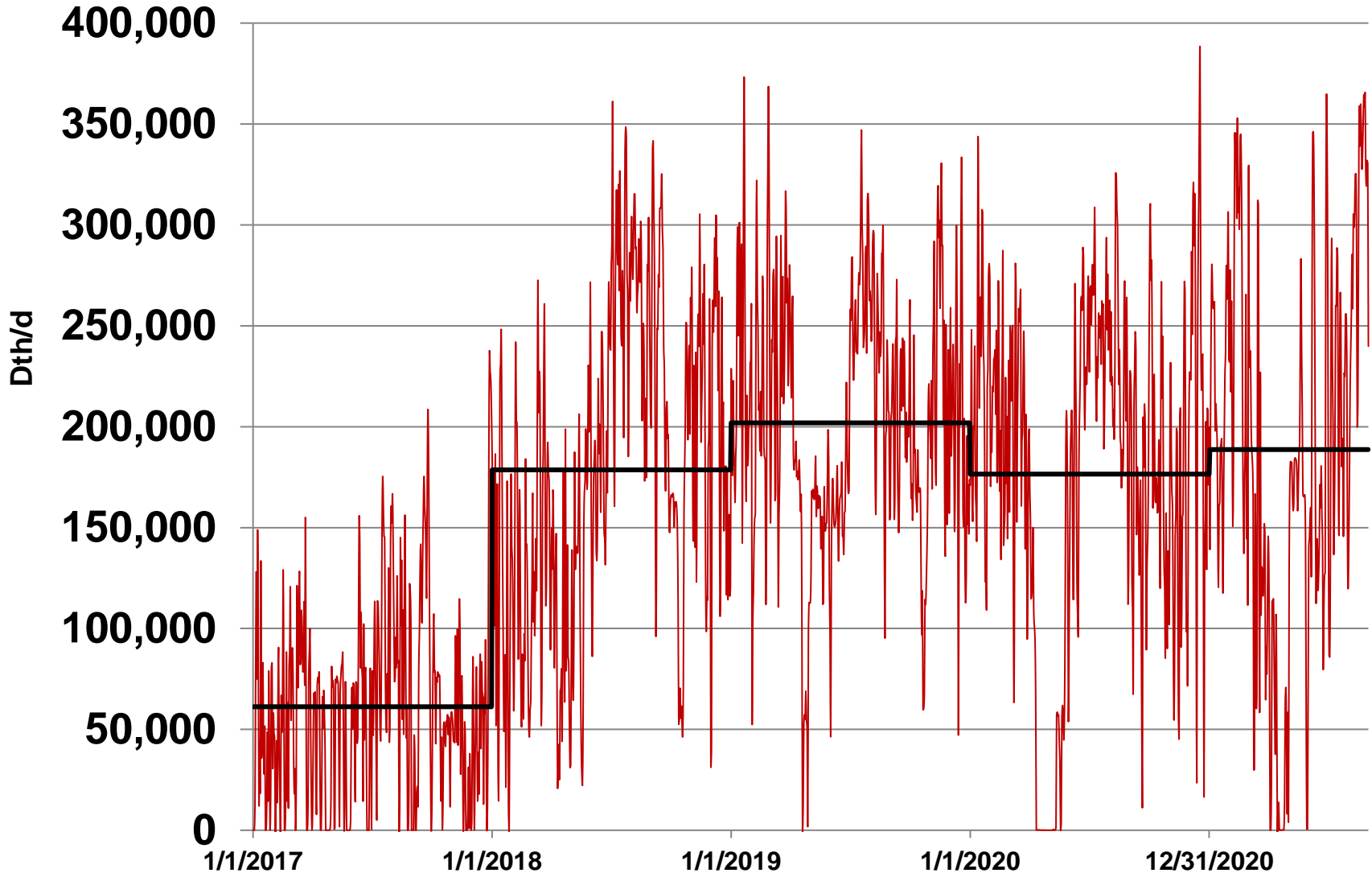
Dth/d
2,500,000





Vector Pipeline™

Deliveries to US and Canadian Power plants (with Annual Average)





Vector Pipeline™

Historical BTU Content

(Btu/cf @ St. Clair)

<u>Year</u>	<u>Btu/cf</u>
2012	1026
2013	1035
2014	1045
2015	1054
2016	1054
2017	1051
2018	1065
2019	1070
2020	1071
YTD	1069



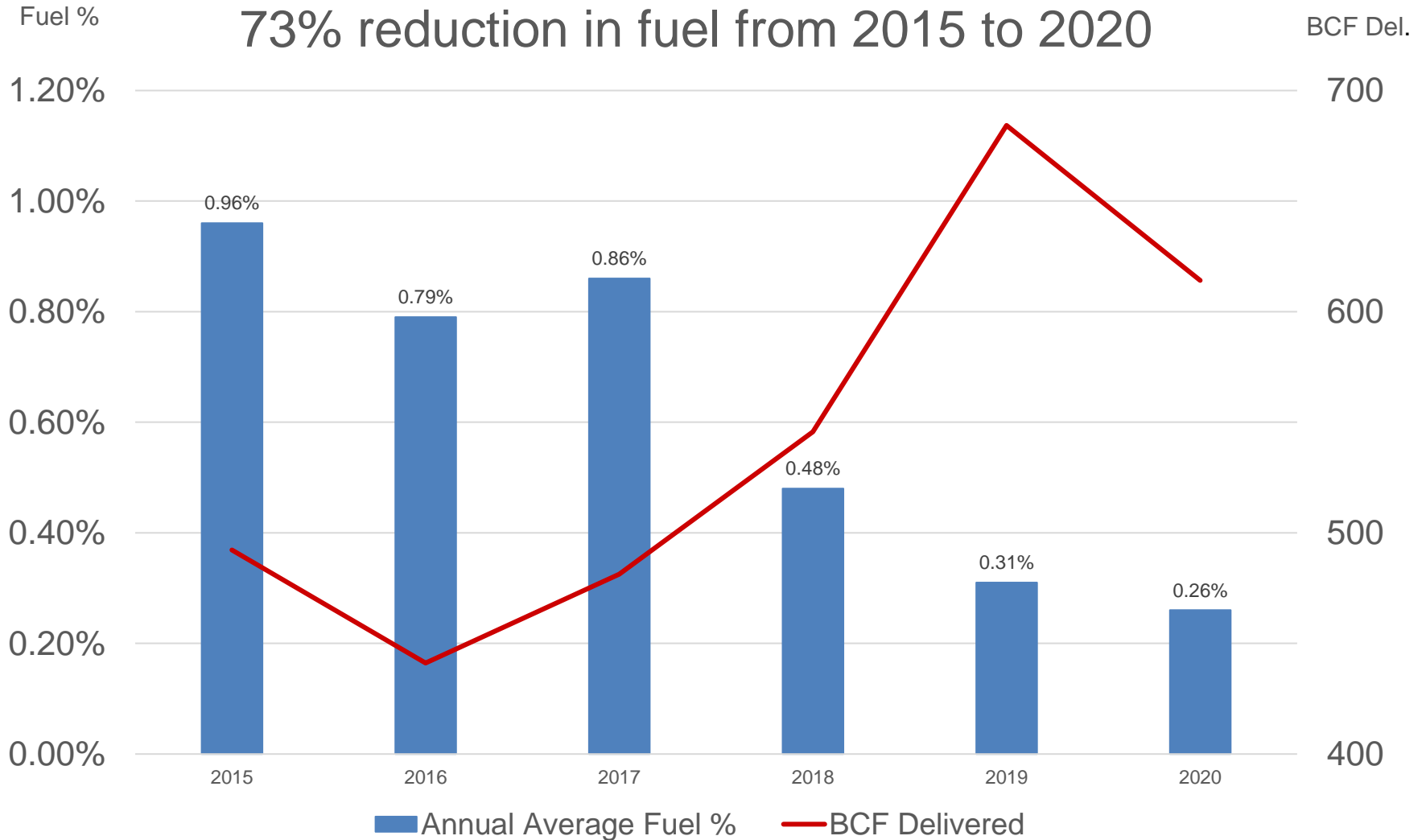
Vector Pipeline™

Operational Efficiency



Vector Pipeline™

Reducing Fuel Consumption





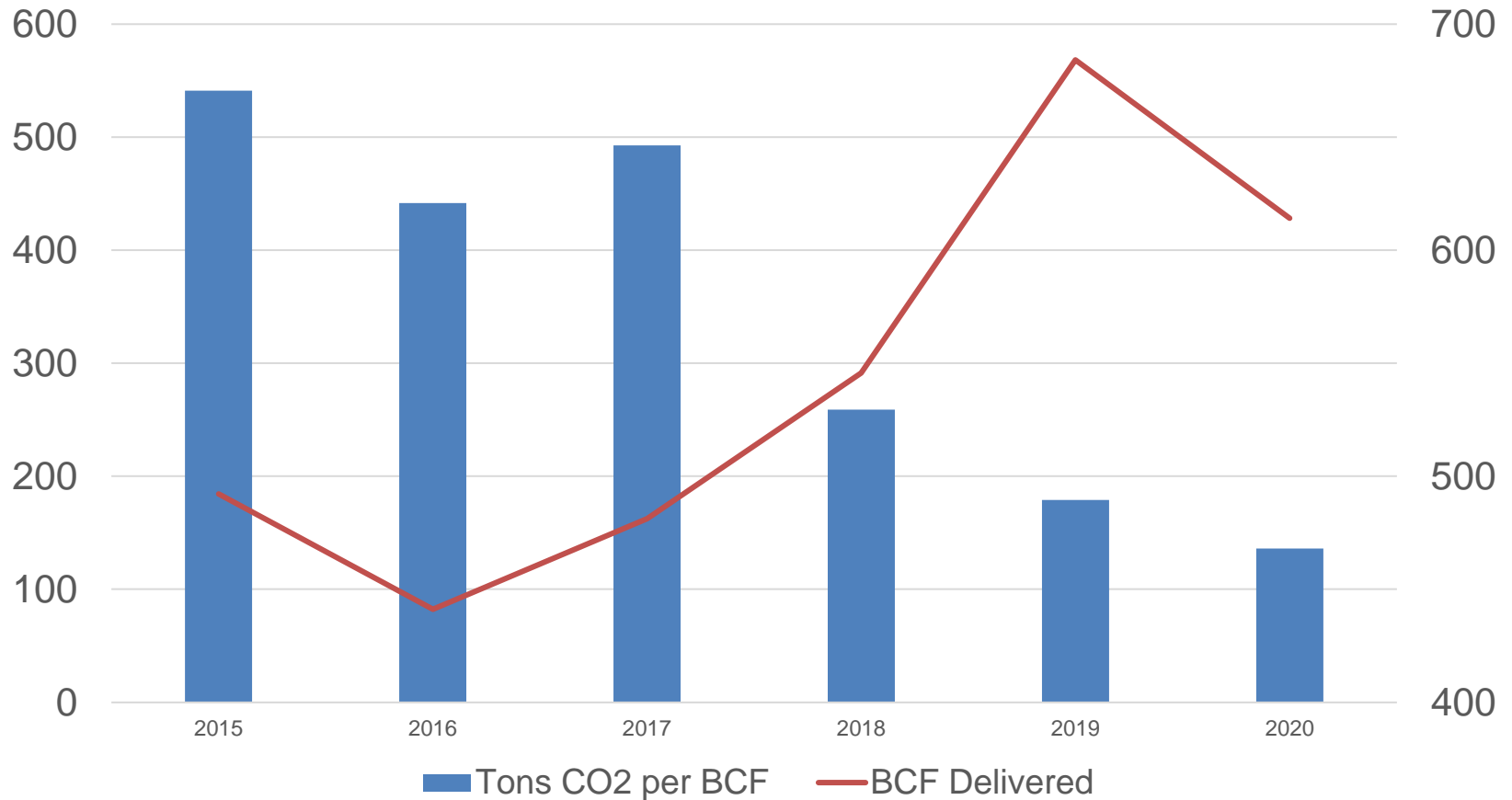
Vector Pipeline™

Reduction in Greenhouse Gas

Tons CO₂/BCF

BCF Del.

75% reduction from 2015 to 2020





Vector Pipeline™

Mitigating Fugitive Emissions

- Best Management Practices of EPA Star Guidelines
- Dry Gas Seals on Compressors
- Minimize/Optimize Station Startups and Shutdowns
- Use of hot taps for new interconnects when applicable
- Convert high-bleed pneumatic actuators to low-bleed
- Redesign blowdown systems to reduce venting during testing – all stations to be converted by 2022
- Replace station fire alarm systems with more accurate detectors to prevent false alarms and emergency blowdowns



Vector Pipeline™

What's Next for Vector



Vector Pipeline™

RNG Gas

- Vector has developers interested in connecting Renewable Natural Gas (RNG) projects into the mainline. They are seeking customers to buy the gas.
- RNG is typically landfill gas or manure digestors from large dairy operations. Its is mostly dairy gas along Vector
- Known potential projects are in mid-Michigan and northern Indiana
- Very small receipt points – typically less than 1,000 Dth per day
- More to come!



Vector Pipeline™

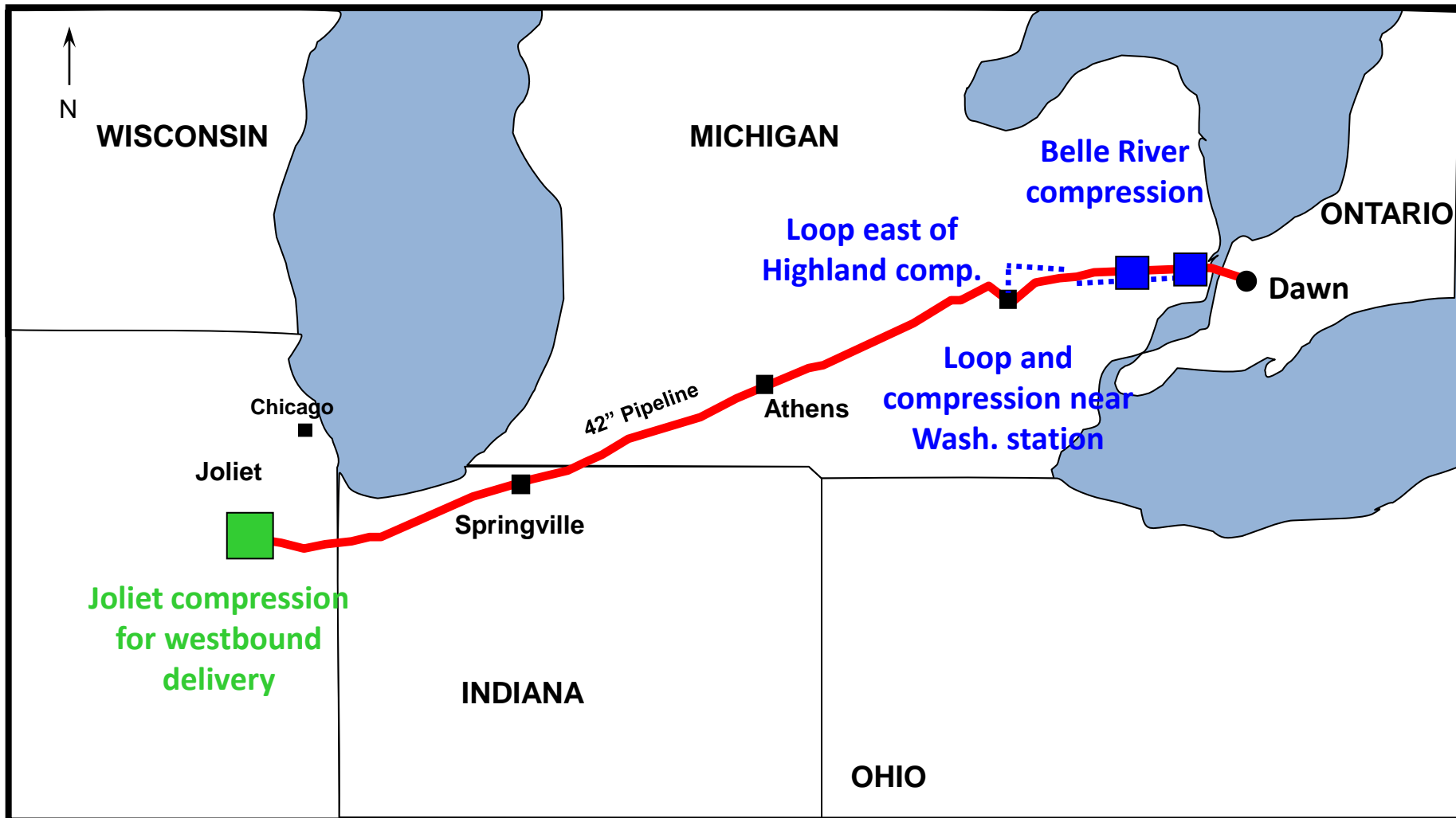
Potential Expansions

- Michigan-Dawn and Michigan-Chicago spreads are strong during the winter months
- Eastbound Expansions:
 - Vector can expand eastbound capacity from MI storage, Appalachian supply or Joliet to Dawn with the addition of loop and compression.
- Westbound Expansions:
 - The eastbound expansion facilities also increase our westbound capacity (MI Storage to Joliet markets)
 - Compression can be modified or added at Joliet to deliver Appalachian supply / MI storage services to markets west of Chicago (Northern Border markets)



Vector Pipeline™

Potential Expansion Facilities





Potential Meter Projects

- Alliance and NBPL meters are oversized
 - May need to replace with smaller meters
- Guardian meter has been fully contracted for the past few years
 - Please contact us if you are interested in additional Guardian meter capacity
- Other
 - Please contact us!



Vector Pipeline™

Dennis Scheibe

Manager, Transportation Services



Vector Pipeline™

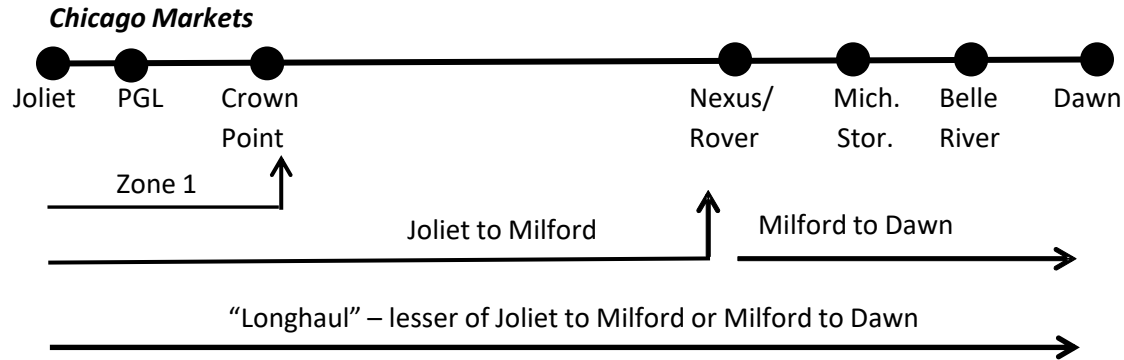
Capacity Postings



Vector Pipeline™

Mainline Capacity Segments

East Bound



West Bound





Example of Capacity Posting

[Vector Pipeline](#) > [Doing Business With Us](#) > [Projected IT Availability](#)

PROJECTED IT AVAILABILITY

October 13, 2021

Note: Vector's "Traditional Joliet to Dawn" longhaul availability can be determined by using the lesser of the "Joliet to Milford Junction" or the "Rover to Dawn" segment.

Projected IT-1 by segment available October 13, 2021 (current day):

- Joliet to Crown Point 1,242,530
- Joliet to Milford Junction 491,219
- Rover to Dawn 491,219
- Milford Junction to Joliet 1,407,150

Projected IT-1 by segment available October 14, 2021:

- Joliet to Crown Point 1,159,288
- Joliet to Milford Junction 79,267
- Rover to Dawn 73,766
- Milford Junction to Joliet 1,246,670



Contract Path / Secondary Points

- Contract and flow patterns may limit Shippers' abilities to flow to secondary out-of-path points
- Secondary In-path: Between primary receipt and primary delivery and in the same direction at contract rate
- Secondary Out-of-Path: Outside of the primary receipt or delivery and/or in the opposite direction of the primary path.
 - Unless explicitly agreed to with Vector, secondary, out-of-path points are not discounted.



Available East Bound Capacity

	<u>Nov 2021</u>	<u>Apr 2022</u>	<u>Nov 2022</u>	<u>Apr 2023</u>
<u>From Joliet:</u>				
Zone 1 Delivery	335,000	399,000	335,000	399,000
Milford Delivery	239,200	183,200	246,200 - 266,200	183,200 - 193,200
Dawn Delivery (LH)	0	0	0	0 - 45,000



Vector Pipeline™
2000-2020

West Bound Open Season Underway!

- Annual term west bound capacity starting April 2022
- 115,900 Dth/d available from Milford Junction or Rover to Chicago markets and points in between
- Availability of major delivery points:
 - Guardian 36,052 Dth/d
 - Peoples Smith Rd 115,900 Dth/d
 - NIPSCO Crown Point 115,900 Dth/d
- Minimum Bid Rates:
 - \$0.16 per Dth for terms of one to three years
 - \$0.15 per Dth for terms of four or more years
- Bids due by 3:00 PM ET on November 5, 2021
 - Send Request for Service form via email to vectormarketing@vector-pipeline.com
- Awarding of capacity based on greatest economic provisions of Vector's FERC Gas Tariff GT&C Section 30.2



Vector Pipeline™

Winter Forward Spreads

October 11, 2021

	<u>21/22</u>	<u>22/23</u>	<u>23/24</u>
MichCon to Dawn	\$0.243	\$0.115	\$0.111
MichCon to Chicago	\$0.544	\$0.424	\$0.393



Vector Pipeline™

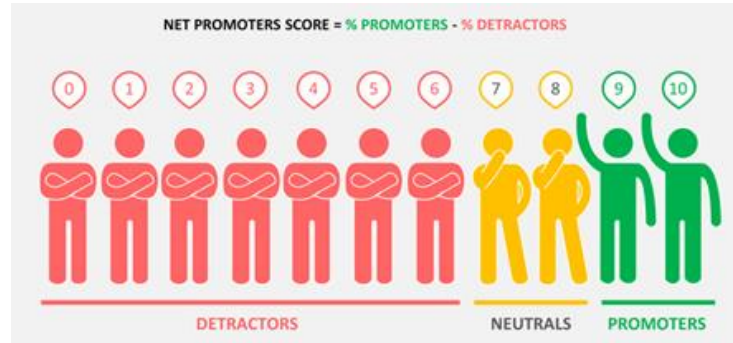
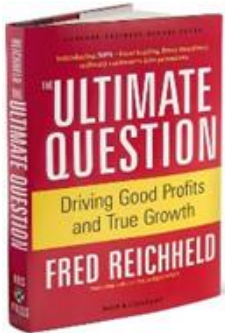
Customer Service Update



Vector Pipeline™
2000-2020

The Net Promoter Score

A Key Piece in Maximizing Performance



What is it:

NPS determines the % of promoters and detractors each supplier has within its respective industry.

Based on:

“How likely would you recommend to a colleague or another business”...

Benefits:

• Unlike Customer Satisfaction, there is a strong correlation to financial performance.

Promoters: Loyal, invested customers

Passives: Neutral, not fully invested

Detractors: Dissatisfied



Vector Pipeline™

Net Promoter Score Overview 2020 Mastio Survey

Promoters

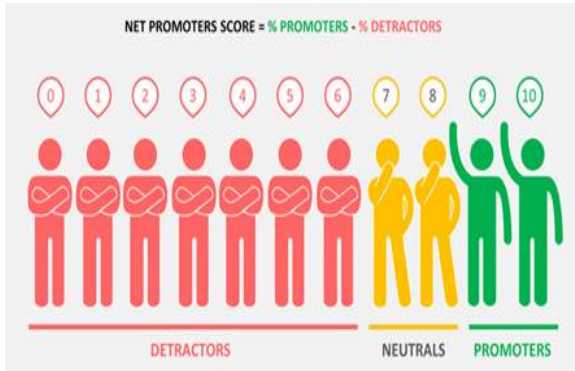
Loyal, invested customers. They stay longer, buy more and recommend you.

Passives

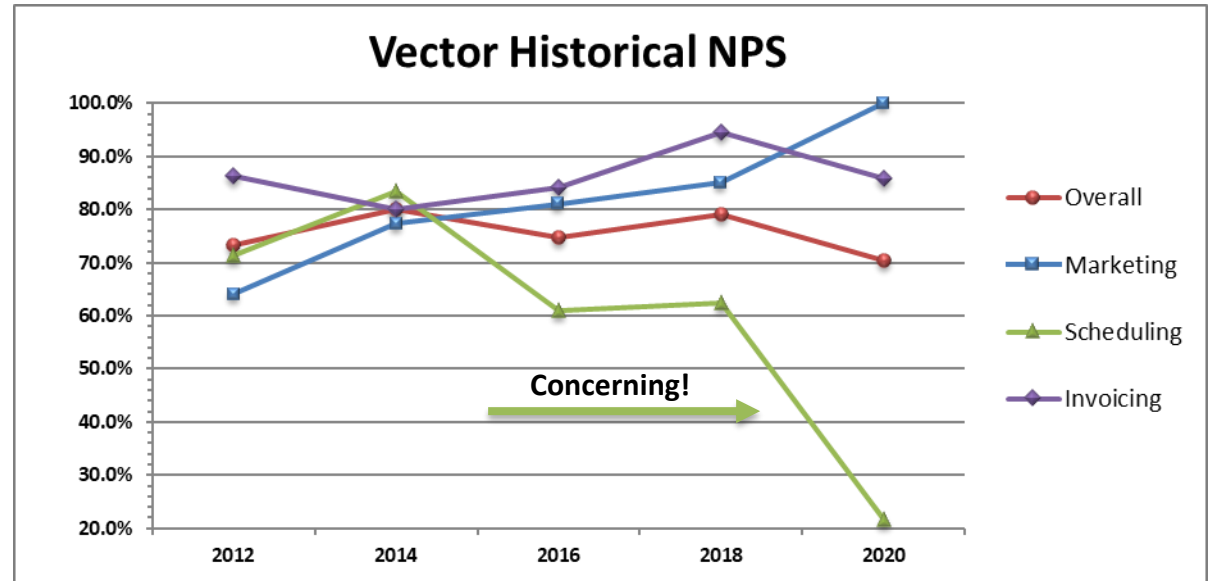
Neutral, not fully invested. Could be easily attracted with a better offer.

Detractors

Dissatisfied. More likely to defect and recommend AGAINST your company.



Vector	# of Observations	% of Promoters	% of Detractors	% of Passives	NPS
Marketing	27	100%	0%	0%	100.0%
Invoicing	21	86%	0%	14%	85.7%
Overall	71	77%	7%	15%	70.4%
Scheduling	23	43%	22%	35%	21.7%

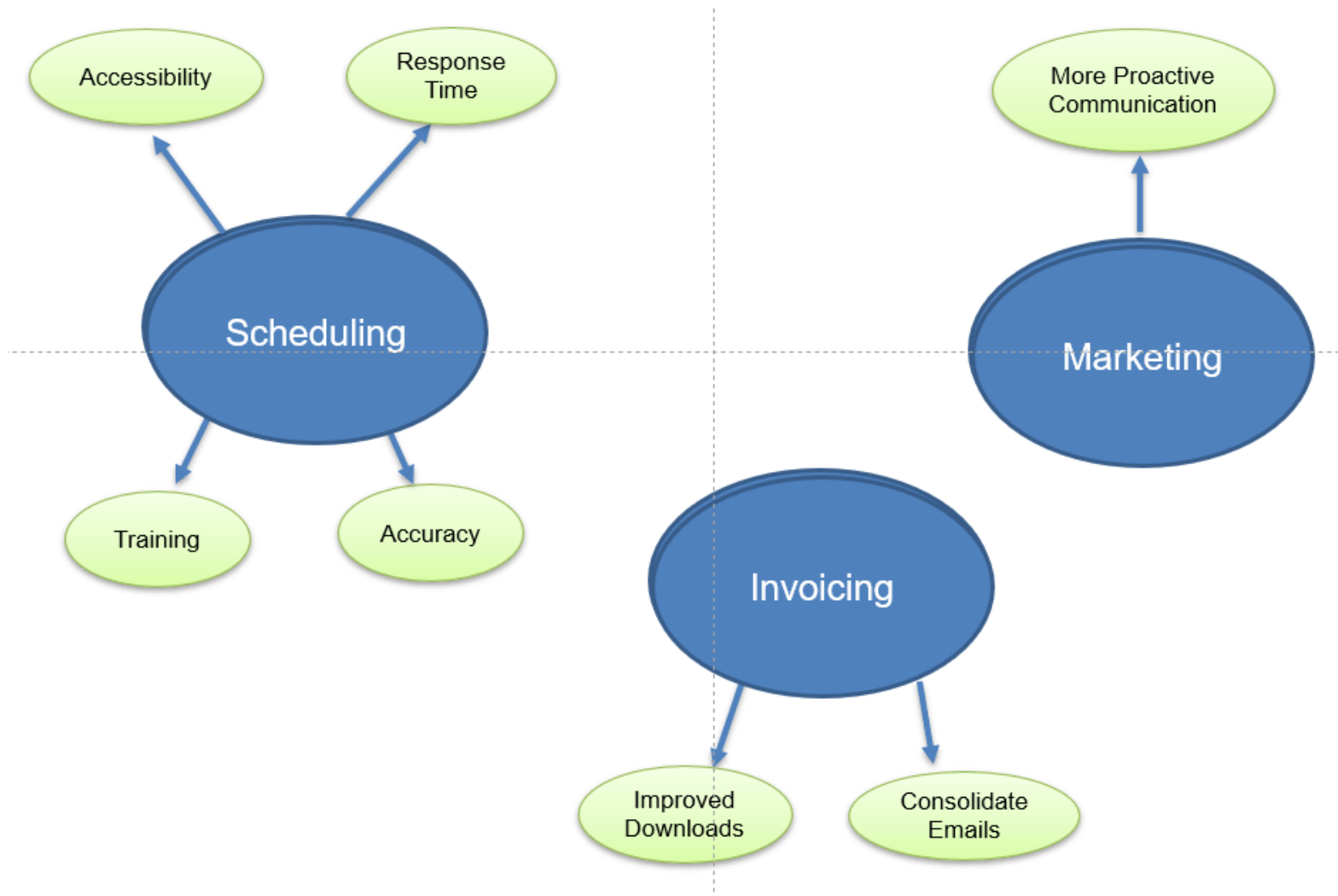




Vector Pipeline™

Customer Service

Areas for Improvement Identified in 2020 Mastio Survey





Vector Pipeline™

Mastio Follow Up on Scheduling Spring 2021

Promoters

Loyal, invested customers. They stay longer, buy more and recommend you.

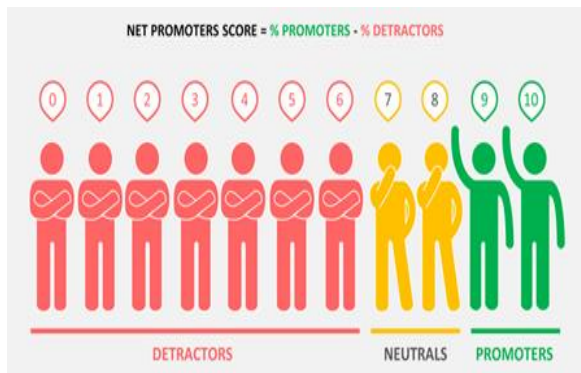
Passives

Neutral, not fully invested. Could be easily attracted with a better offer.

Detractors

Dissatisfied. More likely to defect and recommend AGAINST your company.

Attributes	Importance	Spring 2021	Summer 2020
Representatives who listen well.	9.04	8.29	8.32
Personnel respond quickly to requests.	9.30	8.17	8.22
Scheduled gas volumes are accurate.	9.96	8.04	8.46
Problems are resolved timely.	9.52	7.87	7.91
Easy to contact the right person for help.	9.43	7.83	7.71
Expertise of personnel.	9.22	7.38	7.61
How likely would you be to recommend this company?		8.13	8.00



Vector Scheduling	# of Observations	# of Promoters	# of Detractors	# of Passives	NPS
Spring 2021	24	33.3%	8.3%	58.3%	25.0%
Summer 2020	23	43.0%	22.0%	35.0%	21.7%



Vector Pipeline™

Weekly On Call Posting



Vector Pipeline™

Vector US Pipeline

- Powered by QuickNom™

System Time: 10:16:55 AM Central Time
Statement Date/Time: 10/11/2021 10:15:15 AM

[Gas Scheduling Contacts](#)

Nominations

- [Nomination Confirmation](#)
- [Scheduled Quantity](#)
- [Submit Nomination](#)
- [EDI Confirmations](#)

Flowing Gas

- [Pre-determined Allocation](#)
- [Allocation Imbalance](#)
- [Measurement](#)
- [Measurement by Date](#)

Invoicing

- [Invoice](#)
- [Statement of Account](#)
- [Month To Date Invoice](#)
- [Generate Invoice](#)

Capacity Release

- [Offers](#)
- [Bids](#)
- [Awards](#)
- [Pre-approved Bidders](#)
- [Recall Capacity](#)
- [Reput Capacity](#)

Contracts

- [Contracts](#)

Welcome to Vector QuickNom system. Please choose a link from left navigation.

Gas Scheduling Contacts Oct 8 - Oct 14, 2021

Hot Line: (713) 627-6076 Email: transerv@enbridge.com

Weeknights/Weekend	Nikki Wooley	ICE Chat: nwooley
--------------------	--------------	-------------------

Weekdays	Kenneth Glover	ICE Chat: kglover2
----------	----------------	--------------------

If a timely response is not received, please escalate to:

damita.porter@enbridge.com (weekdays)

james.cymes@enbridge.com (weeknights/weekend)



Vector Pipeline™

Vector Scheduling Team

	<u>Current</u>	<u>New</u>
Primary Weekdays	Antonio Alizo	Carlo Conte
Rotating Nights/Weekends	Nikki Wooley Joel Russ	Tam Price Joel Russ
Weekday Manager	Damita Porter	Damita Porter
Night/Weekend Manager	James Cymes	James Cymes



Internal Scheduling Enhancements

Tools to simplify and improve the accuracy of Vector's confirmation process:

- **US/CAN Border Confirmations**
 - Improved confirmation screen allows for easier cross border match ups
- **Title Transfer Nominations**
 - Shippers now entering Up/Dn K field when selecting a TTS location. Simplifies confirmation of title transfer activity between counter parties.



Vector Pipeline™

Invoicing Improvements Coming Soon

- Monthly Invoice Emails
 - Customers with multiple transportation contracts will receive a combined email with all contracts. One email for US and one for Canadian invoices.
- CSV Downloads
 - On line invoices will have option for CSV download format. The file will provide all invoice details with receipt side and delivery side quantities.



Vector Pipeline™

Vector Marketing

We are available for any type of one-on-one meeting

- Vector's office is open for visitors
- Willing to travel to your office or neutral site
- Virtual MS Teams meeting – Vector overview or detailed project related discussions.
- Connect with Matt or Dennis to schedule

Matt Malinowski

matt.malinowski@vector-pipeline.com

(734) 462-0236 Office / (734) 276-6189 Cell

Dennis Scheibe

dennis.scheibe@vector-pipeline.com

(734) 462-7622 Office / (734) 210-8481 Cell



Vector Pipeline™

**Questions
?**



Vector Pipeline™

Thank You!
We appreciate your business!